

START YOUR HEALTHCARE CAREER WITH HUMANKINDNESS

The Top Entry Level Positions at CommonSpirit Health

To learn more and view available openings across the twenty one states we serve, visit commonspirit.careers



1

CERTIFIED NURSING ASSISTANT

Certified Nursing Assistants (CNAs) ensure patients' comfort by providing patient care and supporting basic needs. These roles include Care Assistant, Certified Nursing Assistant, Nurse Assistant, Home Health Aide.

Certifications Needed*:

Nursing Assistant License/ Certification, Home Health Aide Certification, Advanced Cardiac Life Support (ACLS), Basic Life Support (BLS)

Search available CNA positions: <https://bit.ly/CSHCNA>



2

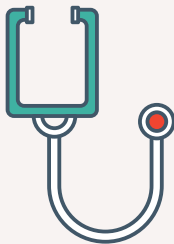
ADMINISTRATIVE

Provide customer service to enhance patient experience through administrative support. These positions include: Administrative, Clerical, Customer Support, Patient Registration, Scheduler, Billing Support, Receptionist, Appointment Scheduler, Medical Office Representative, Patient Registration

Certifications to Consider*:

Basic Life Support (BLS)

Search available administrative positions: <https://bit.ly/CSHAdministrative>



3

MEDICAL ASSISTANT

Start your career by building a solid foundation of outpatient clinic-based healthcare by providing clinical care and administrative support.

Certifications needed*:

Medical Assistant Certification/ Vocational Training, Advanced Cardiac Life Support (ACLS), Basic Life Support (BLS)

Search available medical assistant positions: <https://bit.ly/CSHMedicalAssistant>



4

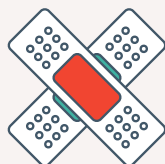
TECHNICIANS

Technicians perform specialized tasks to provide patient care and ensure patient safety. These roles include: Surgical Tech, ER Tech, Monitor Tech, Sterile Processing Tech, Radiology, Phlebotomist

Certifications to Consider*:

American Registry of Radiologic Technologists, American Registry for Diagnostic Medical Sonography, Certification Board for Sterile Processing and Distribution, Certified Surgical Technologist, Dialysis Tech Certification, Emergency Medical Technicians, Phlebotomy Certification

Search available technician positions: <https://bit.ly/CSHTechnician>



5

ENVIRONMENT/ FACILITY SERVICES

Work collaboratively with clinical staff to ensure sanitation and patient safety. Positions include: Environmental Services Tech, Housekeeping, Maintenance Tech, Transportation Aide

Search available environmental services positions: <https://bit.ly/CSHEnvironmentalServices>

*Certifications will vary by location