

LILLY INFORMATION & DIGITAL SOLUTIONS (IDS) FULL TIME POSITIONS



“TAKE WHAT YOU FIND HERE AND MAKE IT BETTER AND BETTER.” -ELI LILLY

OUR PURPOSE Lilly unites caring with discovery to create medicines that make life better for people around the world

FULL TIME BENEFITS

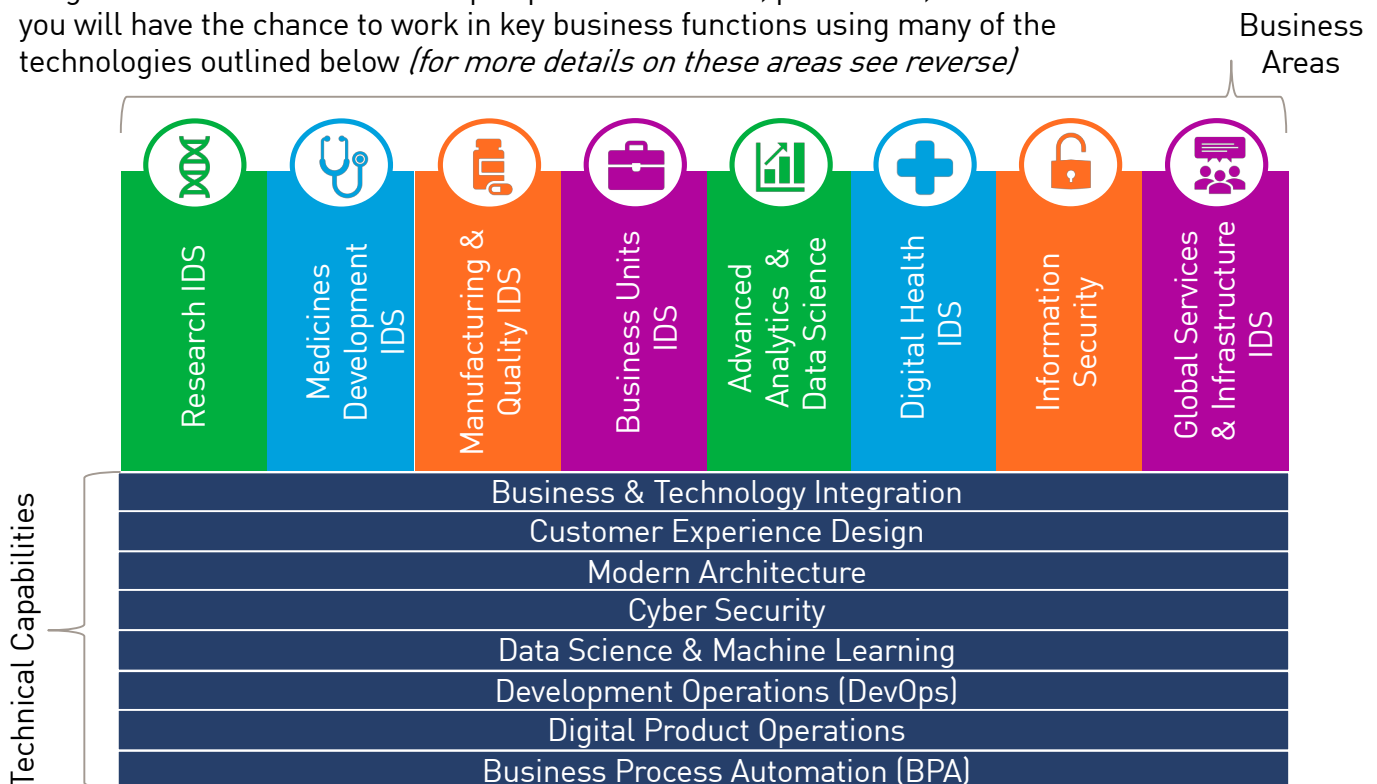
- Competitive pay
- On-site services
- Free health club membership
- Intentional career planning
- Comprehensive retirement plan

WHY WORK AT LILLY?

- Operate in a **collaborative** setting with supportive supervisors and work colleagues
- Leverage projects that impact Lilly’s business of **improving the lives** of patients
- Use technology to solve the world’s most **challenging problems**

WHAT TYPE OF WORK CAN I DO AT LILLY?

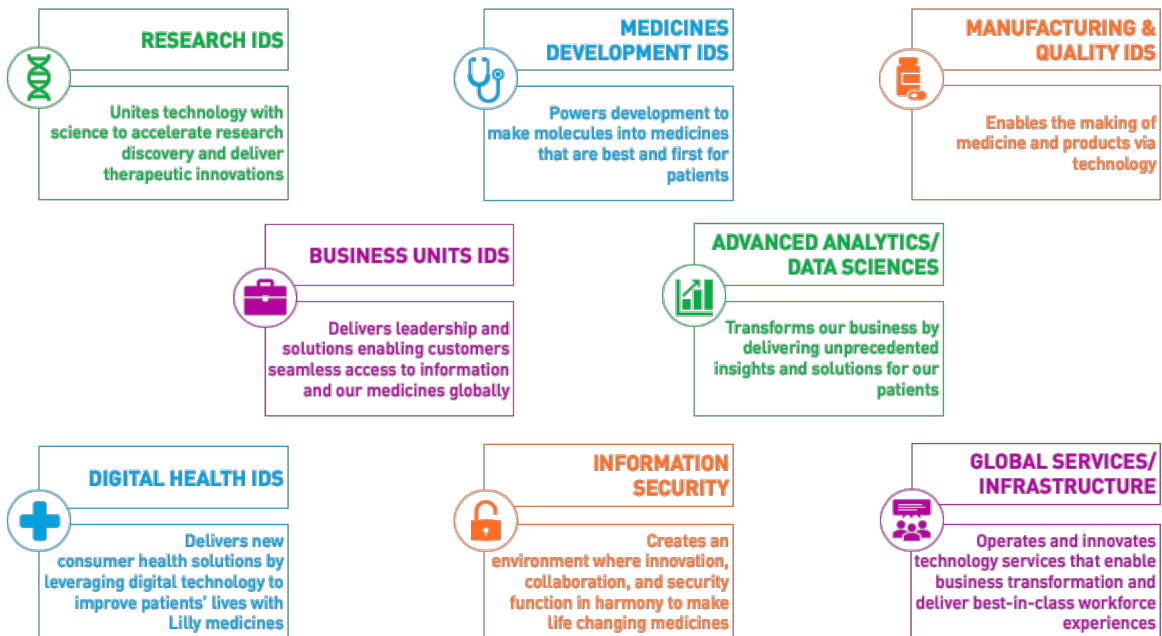
At Lilly we offer many roles that utilize various technical capabilities across a wide range of business areas. Based upon personal interest, prior skills, and area demand you will have the chance to work in key business functions using many of the technologies outlined below *(for more details on these areas see reverse)*



BUSINESS AREAS & TECHNICAL CAPABILITIES



BUSINESS AREAS AT LILLY



TECHNICAL CAPABILITIES AT LILLY

Business & Technology Integration

A capability that ensures that IDS is anticipating business needs and leading the identification of the right technical solution that generates expected business outcomes.

Customer Experience Design

IDS delivers integrated experiences for all our consumers; comprised of information, technical capabilities, and services that work seamlessly together and in the context of the person using them.

Modern Architecture

Modern Architecture defines a network of interconnected components covering applications, services, data and infrastructure.

Cyber Security

People-centric, secure, vigilant and resilient, capabilities that protect information, products, and systems enabling Lilly to deliver on it's mission.

Data Science & Machine Learning

Lilly IDS plays a lead role in developing, deploying, and using advanced data/algorithm capabilities that empower decision making across all functions.

Development Operations (DevOps)

DevOps is a culture, which includes a set of processes, methods and tools for communication, collaboration and integration between development, operations and quality assurance.

Digital Product Operations

Lilly products in the future will consist of molecules, devices, apps, algorithms, and data. This capability ensures that the deployment and support of the digital elements of products and services are robust.

Business Process Automation (BPA)

Business process automation (BPA) is the application of technology that allows employees in a company to configure computer software or a "robot" to capture and interpret existing applications.