

LILLY INFORMATION & DIGITAL SOLUTIONS (IDS) INTERNSHIP PROGRAM



“TAKE WHAT YOU FIND HERE AND MAKE IT BETTER AND BETTER.” –ELI LILLY

OUR PURPOSE Lilly unites caring with discovery to create medicines that make life better for people around the world

INTERNSHIP PROGRAM

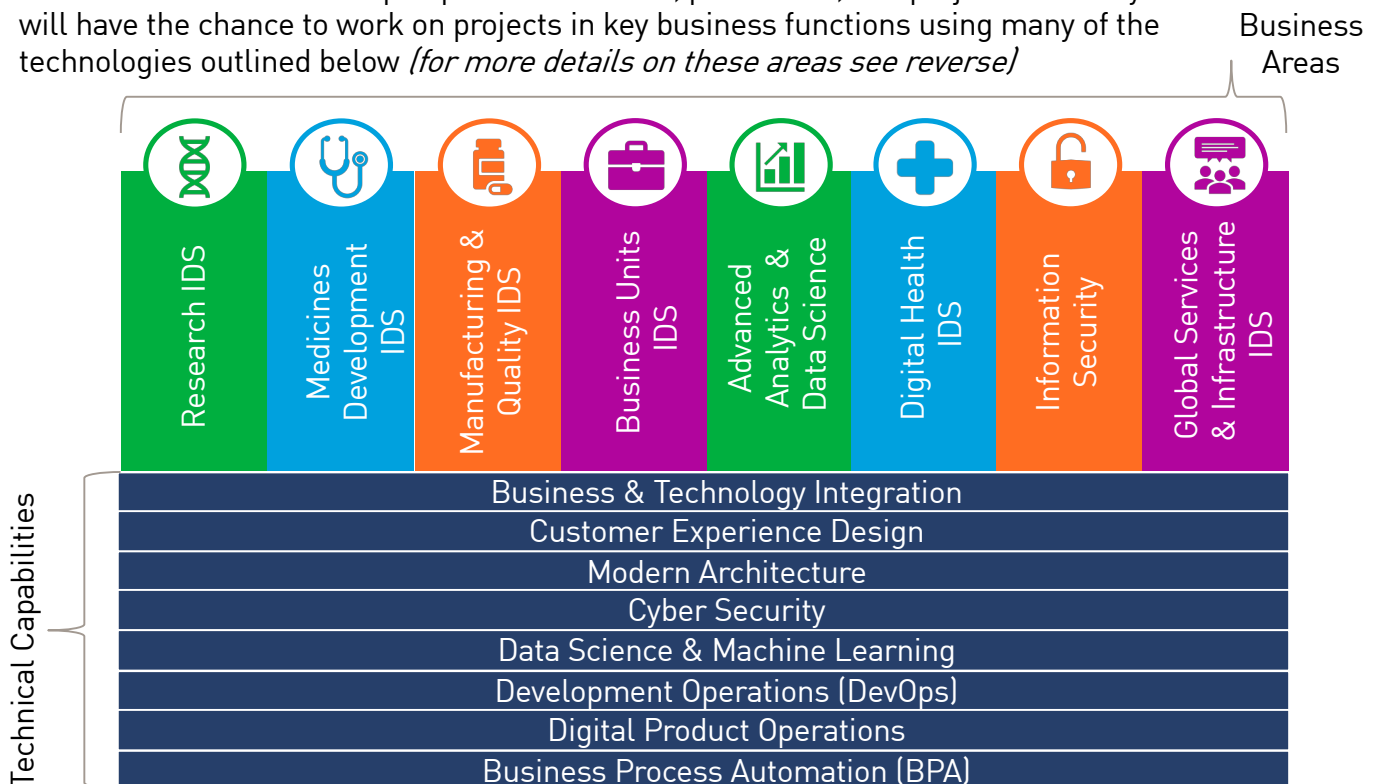
Available for undergrad or MBA
 10-12 Weeks
 Highly competitive salaries
 Exciting and innovative projects
 Housing provided and subsidized
 Fun, social & networking events

WHY INTERN AT LILLY?

Operate in a **collaborative** setting with supportive supervisors and work colleagues
 Leverage projects that impact Lilly’s business of **improving the lives** of patients
 Use technology to solve the world’s most **challenging problems**

WHAT TYPE OF WORK CAN I DO AS AN INTERN AT LILLY?

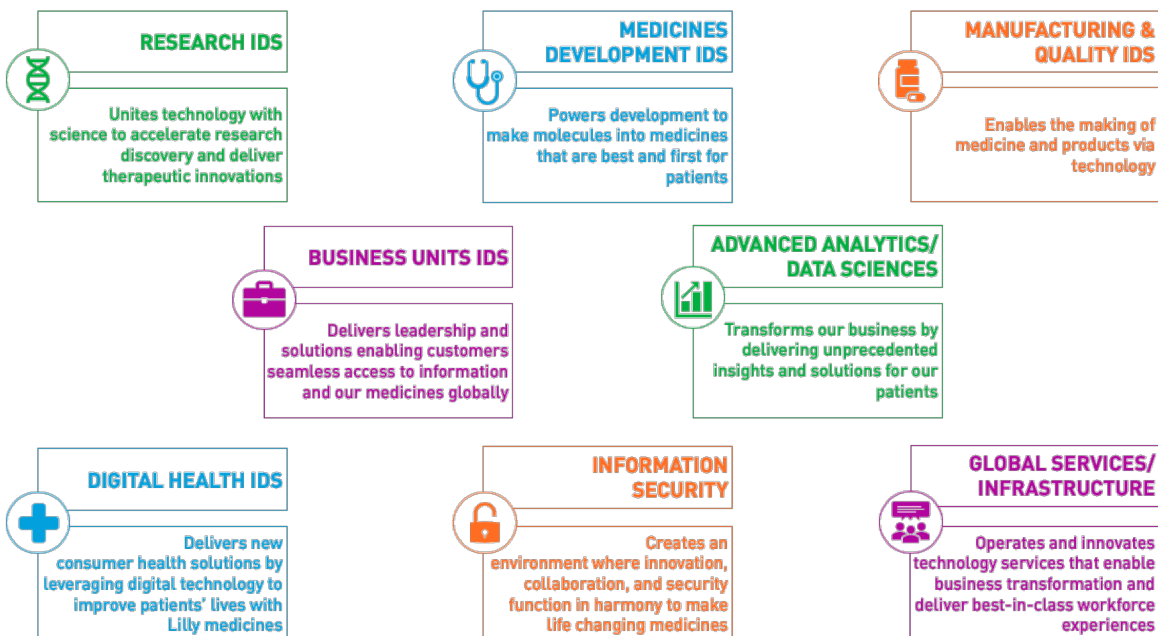
At Lilly we offer many roles that utilize various technical capabilities across a wide range of business areas. Based upon personal interest, prior skills, and project demand you will have the chance to work on projects in key business functions using many of the technologies outlined below *(for more details on these areas see reverse)*



BUSINESS AREAS & TECHNICAL CAPABILITIES



BUSINESS AREAS AT LILLY



TECHNICAL CAPABILITIES AT LILLY

Business & Technology Integration

A capability that ensures that IDS is anticipating business needs and leading the identification of the right technical solution that generates expected business outcomes.

Customer Experience Design

IDS delivers integrated experiences for all our consumers; comprised of information, technical capabilities, and services that work seamlessly together and in the context of the person using them.

Modern Architecture

Modern Architecture defines a network of interconnected components covering applications, services, data and infrastructure.

Cyber Security

People-centric, secure, vigilant and resilient, capabilities that protect information, products, and systems enabling Lilly to deliver on it's mission.

Data Science & Machine Learning

Lilly IDS plays a lead role in developing, deploying, and using advanced data/algorithm capabilities that empower decision making across all functions.

Development Operations (DevOps)

DevOps is a culture, which includes a set of processes, methods and tools for communication, collaboration and integration between development, operations and quality assurance.

Digital Product Operations

Lilly products in the future will consist of molecules, devices, apps, algorithms, and data. This capability ensures that the deployment and support of the digital elements of products and services are robust.

Business Process Automation (BPA)

Business process automation (BPA) is the application of technology that allows employees in a company to configure computer software or a "robot" to capture and interpret existing applications.